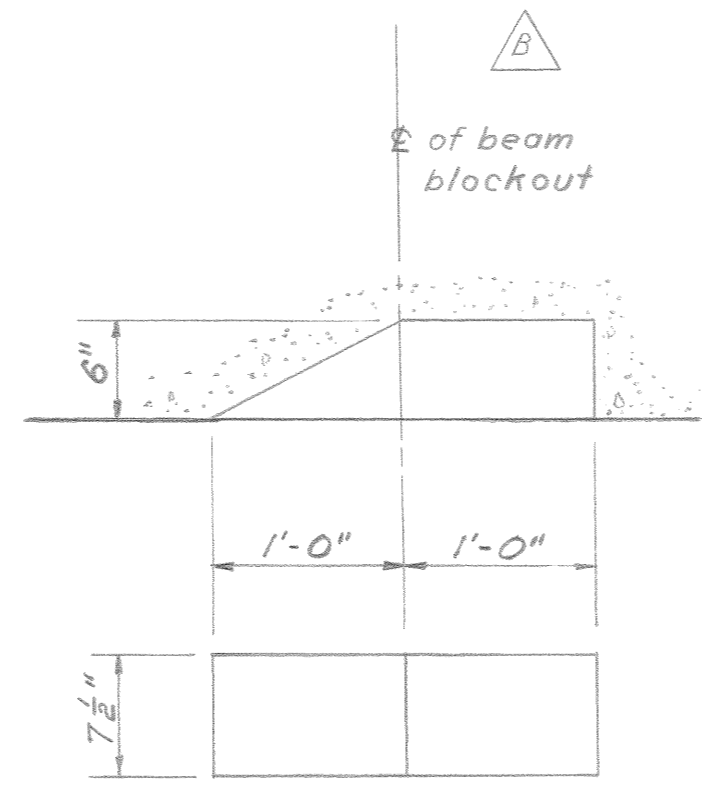
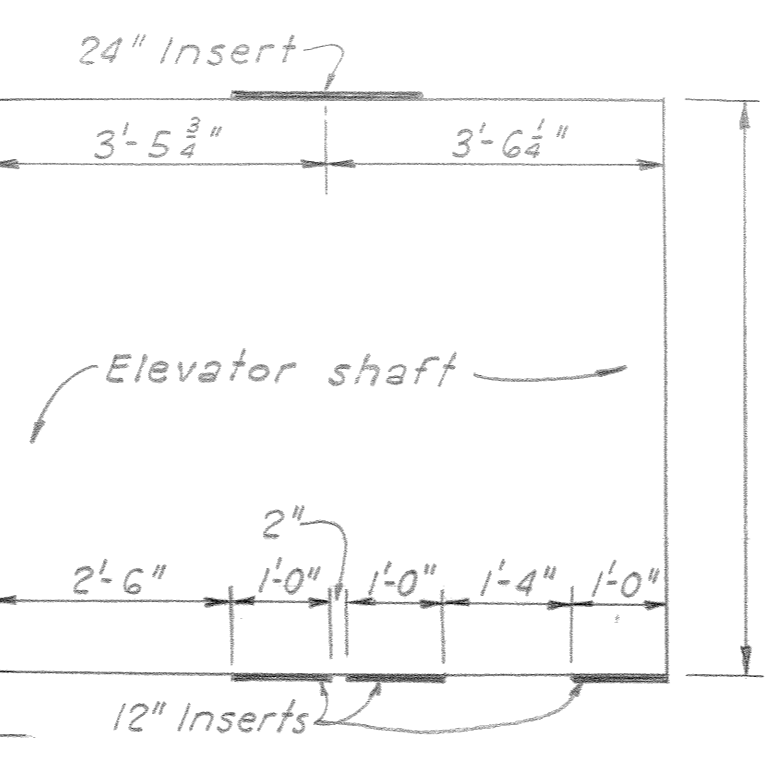


SECTION E 31
SCALE IN FEET

For removable handrail and socket details see Ref. No's. 4 and 5

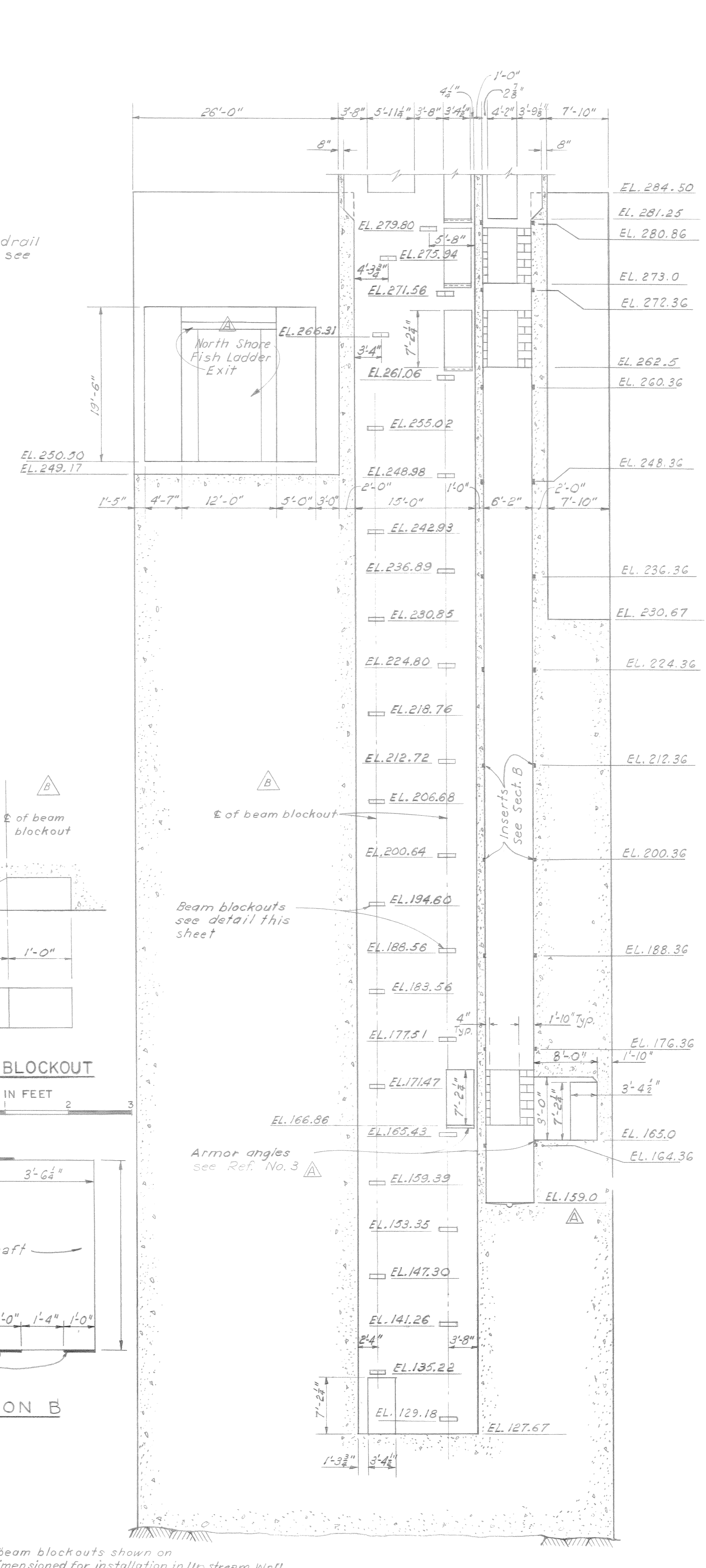


BEAM BLOCKOUT
SCALE IN FEET

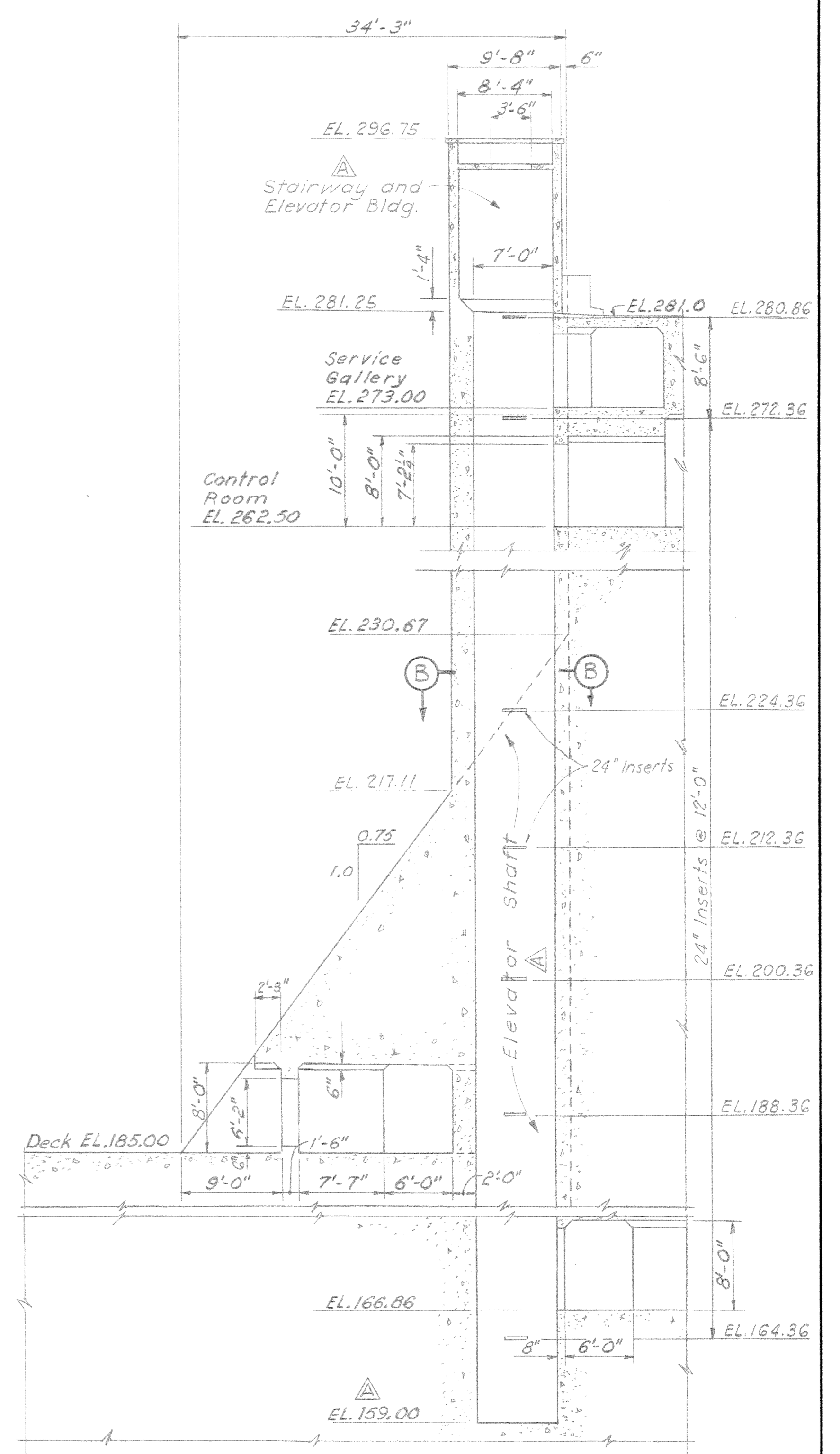


SECTION B

NOTES:
5. Steel stairway beam blockouts shown on Section A are dimensioned for installation in Up stream Wall. Downstream wall is similar but opposite hand.



SECTION A
SCALE IN FEET



SECTION F 31
SCALE IN FEET

- NOTES:
- For General Notes see Dwg. JDD-1-4-2/1
 - Concrete Item (40)
 - Handrail Panel Type Item (103)
 - Armor Angles Item (12)
- REFERENCE DRAWINGS:
- Monoliths 1, 2 & 3 - General Plan JDD-1-4-2/1
 - Monolith 3 - Plan and Details JDD-1-4-2/2
 - Monoliths 1, 2 & 3 Misc. Metal Details JDD-1-5-2/2
 - Monoliths 1 & 2 Misc. Metal Socket Details JDD-1-5-2/6
 - Monolith 3 - Drainage Gallery Access Shaft Cover and Handrail JDD-1-5-2/8
 - Monoliths 2 & 3 - Operating Gallery Removable Handrail JDD-1-5-2/7
 - Monolith 3 - Stairway I JDD-1-5-2/9
 - Monolith 3 - Stairway II JDD-1-5-2/10

REVISION	DATE	DESCRIPTION	BY
AS CONSTRUCTED			
24 SEP 61		Revised weirs in permanent fish ladder exit	EL
18 NOV 59		Added Note No. 5 and minor revisions	EL
16 OCT 59		Added weir to fish ladder exit, added notes & ref. drawings. Added handrail to Sect. F	EL

U. S. ARMY ENGINEER DISTRICT
WALLA WALLA, WASHINGTON

JOHN DAY LOCK AND DAM
COLUMBIA RIVER, OREGON AND WASHINGTON

MONOLITH 3
SECTIONS AND DETAILS

DESIGNED: LEGG	APPROVED: <i>[Signature]</i> DATE: 31 Aug 59
DRAWN: R.L.L.	CHECKED: C.E. DISTRICT ENGINEER
CHECKED: W.H.L.	SCALE AS SHOWN
PREPARED: <i>[Signature]</i>	INV. NO. ENG. C-60-2
CHIEF DESIGN BRANCH	FILE NO.
RECOMMENDED: <i>[Signature]</i>	SHEET 50
CHIEF ENGINEERING DIVISION	JDD-1-4-2/33